



President Message

Happy New Lake Year to all our Arbutus Lake Members:

I would personally like to thank all of our incredibly talented board members for the almost herculean efforts and exceptional leadership they have shown in the past year of service to the stewardship of Arbutus Lake. And I also want to thank all the members who have shown up and have dug deep to help.

Our Conservation Committee has guided us well on our way to securing the Turtle Cove shoreline for the foreseeable future through our generous donors, who worked tirelessly with the Grand Traverse Regional Land Conservancy. Our long-awaited website is up and running, more beautiful and informative than I could have ever imagined. Our Governmental Relations committee has worked tirelessly to follow up with East Bay Charter Township to make sure your voice is heard at meetings where plans might be enacted that set precedents which could lead to future water quality issues. Meanwhile water quality continues to be monitored regularly, invasive plant species continue to be treated, water level trends continue to be tracked, welcome packets go out to new owners that do an ever better job of educating new neighbors on what it takes to preserve the nature of Arbutus Lake, our newsletter improves with every issue as members submit old and new photos to share your experiences, the loon nest gets launched and brought in, plant sales are planned, the documents get produced and archived, the treasurer tracks dollars to keep us in the black, signs get repaired and

replaced, etc.etc.etc. If any of these projects or tasks are of special interest to any Riparian Owner or Friend of Arbutus Lake, I am sure your participation would be well received.

What a year! If you're old enough to remember the Bartles and Jaymes wine cooler commercials, then you'll appreciate this quote: "Thank You for Your Support". All of you!!!

As we head into Summer, please accept my wish that you are all blessed with a summer of Peace, Happiness, Love and Abundance.

Sue Foster

Camp Hayo-Went-Ha News

By Amanda Macaluso

"If you are a summer camp what happens all year?" What does happen all year round at YMCA Camp Arbutus Hayo-Went-Ha? Being a seasonal summer program, our staff drops from about 85 seasonal employees to 2 year round staff with a number of hourly and daily staff periodically throughout the off season assisting with a number of tasks. While there are no g-swims, polar bears, or campfires, there is still a great deal to accomplish during the non-summer season months.



As you can imagine, at a camp over a hundred years old, with over 35 structures, there are certainly many maintenance and preservation projects year round. There have been decks repaired, historic cabins preserved, a well shed replaced, and a carpet ball game made. We also dedicate several weeks to closing up camp and securing all program areas and buildings for the winter months and another several to open these all up again in the spring.

We work year round to be sure the summer season goes off without a hitch. We use the fall for evaluation, polling campers and staff for suggestions and improvements to implement the following year. We also analyze income and expenses and make budget discussions for the following year that take up most of September. We open registration in the fall for the following summer, and implement marketing plans almost immediately for the upcoming year. The planning of website updates, social media posts, and open house dates and locations take place throughout the year as well.

Staff recruitment also is a large undertaking. Recruiting, interviewing and hiring staff for the following season starts almost immediately with our returning staff contributing to a 65% staff return rate. We then need to start searching for about 30 or so new staff for specific positions that are open for the following summer. We also work year round planning our three weeks of staff training each year in order to best prepare our seasonal staff for the upcoming summer.

Our wilderness adventure program is a significant aspect of our program and the logistics of sending out 45 separate trips every summer is a year round process as well. Applying for permits, planning routes and dates of the trip, organizing transportation, and ensuring we have all appropriate equipment certainly keeps things busy. There are also a great deal of purchases made every year for both trips and on-site programming - you can never have too many gaga balls and crafts supplies!

Our camps must follow a number of state and local regulations that we annually review, renew and complete. We conduct annual fire inspections, update American Camp Association requirements and paperwork for the State of Michigan, check all local health department needs, and review insurance and vehicle inspections each year.

Communication with camper families, staff, alumni, vendors and services also keeps staff busy year round. Our team answers parent questions, plans events, and answers emails about the summer throughout the year. It is always a good day, especially in the winter when you have the opportunity to talk to a family about the benefits of a camp experience. (Especially when it is cold and snowing outside.)

There certainly is never a dull day at YMCA Camp Arbutus Hayo-Went-Ha!

We wish you all another great summer on our beautiful Arbutus Lake. Please come visit us during our Open House on May 21, 2023 to learn more! See you soon.



The Y^WCA logo is in the top left corner. To its right, the text reads "YMCA HAYO-WENT-HA CAMPS INVITES YOU TO". Below this, a purple banner contains the text "ARBUTUS LAKE SITE OPEN HOUSE". In the center is a photograph of a lake at sunset with people on the shore. At the bottom, the text "May 21st 2023, 11 am - 3 pm" is displayed.

ALA Annual August Potluck!

This year's potluck fun will be at **10am on Sunday August 13, 2023**. You just need to bring your own table service and a dish to pass, the board will provide Scrambled Eggs, French Toast, Pancakes coffee and juice. Please consider coming to the potluck and meeting your neighbors, it really is fun to get to know everyone and their history on the lake, or their history in the making.

We will have a brief meeting while you eat. We look forward to seeing you there!



2023 Arbutus Lake Association Meetings Schedule:

April 22 (9:00 am)
May 20 (9:00 am)
June 17 – **General Membership Meeting** (10:00 AM)
July 15 (9:00 am)
August 13 Breakfast Potluck (10:00 AM)
At Camp Arbutus Hayo-Went-Ha
September 16 (9:00 am)

All meeting times are Eastern Standard Time (EST) and held at East Bay Township Hall, unless otherwise noted.

The Final Stretch of Fundraising for Turtle Cove

Our journey with the Grand Traverse Regional Land Conservancy to protect nearly $\frac{3}{4}$ of a mile of shoreline and 120 acres of hardwood forest in the shallow cove on Arbutus Lake 4 known as Turtle Cove, began late 2021. To date, 194 households have pledged or already given \$2,029,450 towards our \$2,473,000 goal. That leaves a remaining balance needed of \$443,556.

GTRLC staff has submitted a grant proposal to the Clean Michigan Initiative for \$500,000. The \$3.3M is available for all of Michigan in 2023 and since the grant is very competitive, it's not likely that they will receive the entire fund. We will need 15% of what's available but you can't get it if you don't ask! Word should come on the grant money near the end of May. We continue to encourage folks to make contributions toward the project.

The deadline to complete the fundraising is December 2023. With the likelihood of not receiving their entire 'ask' in grant money, GTRLC is looking for an individual or company to offer a 1:1 challenge match to get us to the finish line. Please reach out to Kate Pearson at (231) 922-1244 or kpearson@gtrlc.org to make a donation or offer help with a match.

Once the fundraising goals have been met, the nature preserve and just under two miles of trail will be opened to the public. We are deeply grateful for each and every one who has given and those yet to give, who dig deep to preserve and protect our beautiful Arbutus Lake Turtle Cove for generations to come.



QR Code Spotted!

If you happen to be at the Boat Launch this spring checkout the QR Code we have placed on the information board. This will bring any visitors coming to our lake to our ALA Website. On the Website they can access a map of the lake with the hours of high speed boating, directional arrows to help them go the "correct" direction around the lake and so much more. This is another layer of information to help make everyone's day on the lake safe and enjoyable!

If you haven't visited the Website lately Check it out!

[Arbutuslakeassociation.org](https://www.arbutuslakeassociation.org)



Arbutus Lake Level Report - Spring 2023

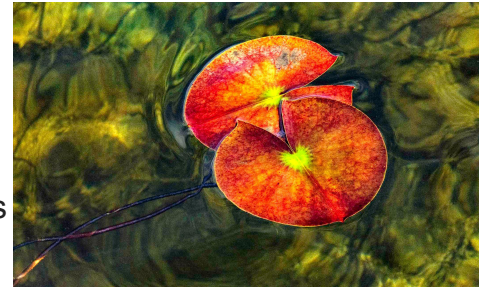


The final reading of 2022 was taken on December 4th, a measurement of 804.59' above sea level (ASL). Ice cover retreated from the lake this year on April 10th, which is 4 days earlier than 2022. The first reading of 2023 was taken on April 11th, a measurement of 805.00' ASL, yielding an increase in lake level of 4.92 inches over the Winter season. On April 22, 2023, the first ALA Board meeting of the year, the lake measured 804.93' ASL. This is 1.08 inches lower than it was on the same date last year. It remains only 3.48 inches lower than the highest level on record, 805.22' ASL, measured October 23, 2020. It is 36" inches higher than the lowest level on record, 801.93' ASL, measured September 18, 2011.

For additional information regarding the lake level, please feel free to contact Brandon Falenski by email at bfalenski@yahoo.com

Protecting Our Lakes & Shorelands: Shoreland Ecology & Sustainable Management

Be an informed and active Arbutus Lake steward who helps preserve our recreational and environmental gem. Creating/maintaining a shoreland (shoreline and uplands) with an abundance of native plants does that, including protecting water quality. Attend this "fifth annual "Protecting Our Lakes & Shorelands" presentation in person and meet fellow local riparians or attend virtually.



- **Saturday, June 10, 2023**
- **1:00 PM 2:30 PM**
- **Grand Traverse Conservation District - Boardman River Nature Center - 1450 Cass Road Traverse City, MI, 49685 ([map](#))**
- **[Google Calendar](#) [ICS](#)**

Description: Trees are a critical component of any healthy waterfront as they provide many functions, including bank stabilization, reduced erosion, carbon sequestration, and soil structure, in addition to providing food sources for many land based and aquatic organisms. District Forester Ellie Johnson will discuss the importance of trees to the shoreland ecosystem and how to sustainably maintain this human/surface water interface.

Virtual join-in option available!

Registration: Required. Please [click here](#) to register.

SPREADING POSITIVE RIPPLES, while ENCOURAGING STEWARDSHIP of OUR FOREST LAKE AREA and beyond ~ ~ ~ ~ ~

2023 ALA Boat Wash (Invasive Species)

We tried our first invasive species boat wash last summer in August. We are hoping to do possibly two of them this summer, one in July and one in August. Emily Cook, Benzie County AISN coordinator and her two assistants will set up in a perfectly unobtrusive location at the 4th lake boat launch to allow easy boat traffic flow to the lake and allowed those who wished to have their boat rinsed (max time 3-5 min depending on size of the watercraft). Invasive species education will be initiated by the volunteers and the ALA reps will be on hand to distribute laminated Arbutus lake map/boating rules during that brief wash time. Watch your email for a time and date!



2022 Data Report for Arbutus Lake

Grand Traverse County

We have great water quality in Arbutus Lake! Arbutus Lake is rated as an oligotrophic lake. Oligotrophic is the optimum water quality classification.

The graphs are a summary of the data collected from Arbutus Lake every 2 weeks during the summer of 2022. The graphs are prepared by the Cooperative Lakes Monitoring Program which compiles data from more than 3000 lakes in Michigan. Water quality tests have been conducted in Arbutus Lake for more than 40 years, which is a significant amount of data to observe trends. Long term monitoring indicates lower nutrient levels in the lake over time. If you would like to read the whole report you can find it on our website Arbutuslakeassociation.org

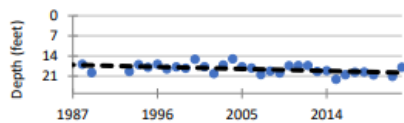
Site ID: 280109

Arbutus Lake, Grand Traverse County 2022 CLMP Results



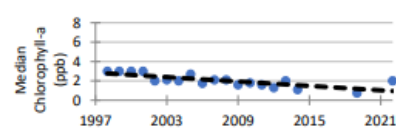
Secchi Disk Transparency (feet)

Year	# Readings	Min	Max	Average	Std. Dev	Carlson TSI
2022	10	13.0	22.5	17.9	3.0	36
2017-2021	42	14.0	32.0	17.9	4.5	34
1980-2016	439	6.5	40.0	18.3	4.2	35
2022 All CLMP Lakes	3178	1.0	63.0	11.6	2.5	43



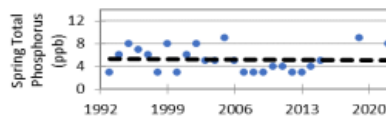
Chlorophyll-a (parts per billion)

Year	# Samples	Min	Max	Median	Std. Dev	Carlson TSI
2022	5	1.6	2.6	2.0	0.4	37
2017-2021	7	<1.0	1.3	0.8	0.4	<31
1998-2016	89	<1.0	5.1	0.8	0.8	37
2022 All CLMP Lakes	687	<1.0	43.0	3.7	5.3	43



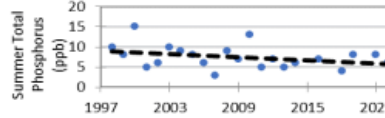
Spring Phosphorus (parts per billion)

Year	# Samples	Min	Max	Average	Std. Dev	Carlson TSI
2022	1	8.0	8.0	8.0	NA	NA
2017-2021	1	9.0	9.0	9.0	NA	NA
1993-2016	23	<=3 W	9.0	5.0	2.0	NA
2022 All CLMP Lakes	220	<5	220.0	20.7	21.3	NA



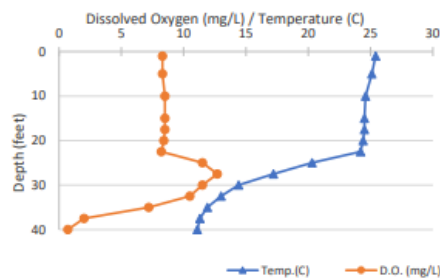
Summer Phosphorus (parts per billion)

Year	# Samples	Min	Max	Average	Std. Dev	Carlson TSI
2022	1	6.0	6.0	6.0	NA	30
2017-2021	3	<5 T	8.0	6.7	2.3	31
1998-2016	18	<=3 W	15.0	7.7	3.0	33
2022 All CLMP Lakes	234	<= 3	150.0	17.4	15.3	45



Dissolved Oxygen and Temperature Profile

8/4/2022



Summary

Average TSI	2022	2017-2021	1980-2016
Arbutus Lake	34	32	35
All CLMP Lakes	44	40	42

With an average TSI score of 34 based on 2022 Secchi transparency, chlorophyll-a, and summer total phosphorus data, this lake is rated as an oligotrophic lake.

Long term monitoring shows slight downward slopes on the parameters, indicating a slow movement toward lower nutrient levels in the lake over time.

Due to the low nutrient levels, the lake is able to maintain dissolved oxygen throughout most of the water column the whole summer. Only the very bottom waters become anoxic.

* = Minimum # samples not met for average/median/TSI value

<1.0 = Chlorophyll-a: Sample value is less than limit of quantification (<1 ppb)

W= Value is less than the detection limit (<3 ppb) T= Value reported is less than the reporting limit (5 ppb)

Arbutus Lake is FUN in ALL Seasons!



REMINDER! Have you paid your dues?

Your Annual Dues of - \$50 for Riparian Owners
\$10 for Friends and Family of the Lake

Due August 31, 2023.

Dues are payable to:

Arbutus Lake Association, Inc,
PO Box 404
Mayfield, MI 49666



Milfoil Treatment

We are planning on treating Milfoil either the last week of May or during the week of June 5, 2023. There are many factors that go into when we treat: water temperature, volunteer availability, weather and chemical availability. Water temperature and weather are the main factors and why we can't always say exactly when we can treat. We will be emailing you the week prior to treating the lake.



Thank You for your Photos!

I would like to thank Jodi Derylo; Allyson Tinker; Joyce Hicks; Ted Lacey; Kathi Mudd and Joe Mattingly for sending me the beautiful Photos to use in this Newsletter. If you have a beautiful Photo of the lake or nature that you would like to share in the Newsletter please email them to: jodiderylo.ala@gmail.com



**General Membership Meeting Minutes
are now available on our Website**

Arbutuslakeassociation.org